



White Paper

SharePoint Security Sync - White Paper

Aim:

SharePoint Security Sync is a ISV productivity app that syncs and replicates Dynamics 365 CRM user's security privileges in SharePoint.

It ensures that the user has same security privileges in both Dynamics 365 CRM and SharePoint.

Features:

- Real time sync of security permission
- Replicate Association and Dissociation of security role to/from a user/team in Dynamics 365 CRM with SharePoint
- Replicate sharing of record with another user/team in Dynamics 365 CRM with SharePoint
- Assign record to another user/team in Dynamics 365 CRM and reflect it in SharePoint simultaneously
- Add/Remove members to/from team in Dynamics 365 CRM and replicate it in SharePoint simultaneously
- Sync deletion of security role in Dynamics 365 CRM with SharePoint
- Supports all types of entities
- Multiple files and folders can be dragged and dropped at one time to SharePoint
- Single as well as multiple files or folders can be uploaded
- Users can download documents from SharePoint
- Email with file's link or file as attachment can be sent
- Files/Folders can be renamed
- Bulk copy/move Note/Email/Sales Literature Attachments to SharePoint
- Sharable links of files/folders can be created which can also be copied for external use
- Deep search can be done for the entered keyword
- Access control of user actions on Attach2Dynamics
- Delete files from SharePoint
- View files before downloading
- Support for configuring multiple SharePoint connectors

Supported Versions

Versions: Microsoft Dynamics 365 v9.x and above.

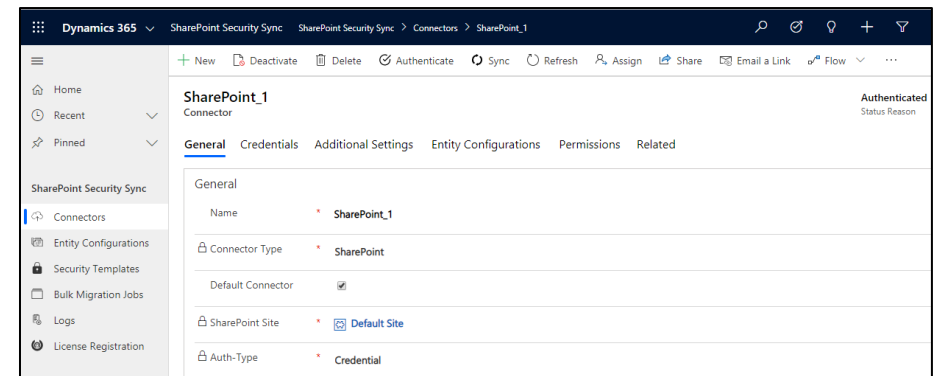
Deployment Models: On-Premises with IFD and Dynamics 365 Online

Who needs it?

Security models of both Dynamics 365 CRM and SharePoint are different. In times, it becomes necessary to restrict access to Dynamics 365 CRM data stored in SharePoint. With SharePoint Security Sync you can safely store and manage documents in SharePoint by replicating Dynamics 365 CRM security privileges in SharePoint.

Configure Connectors

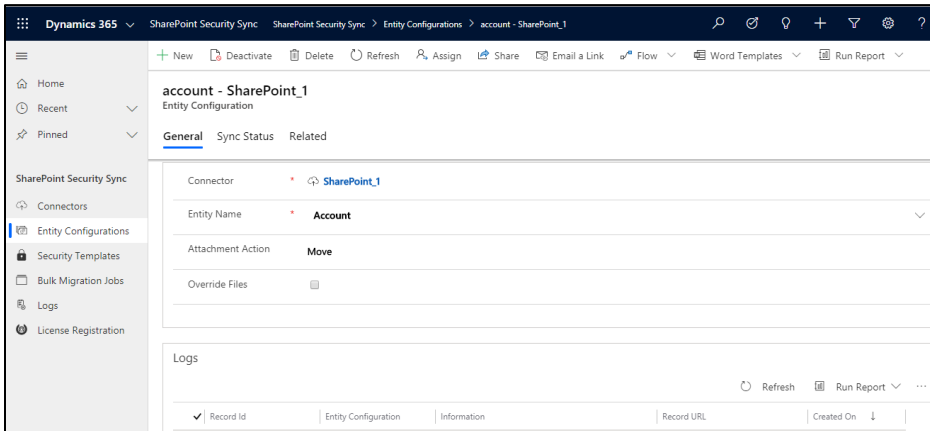
Configure connector to enable syncing with SharePoint security model.



Entity Configuration

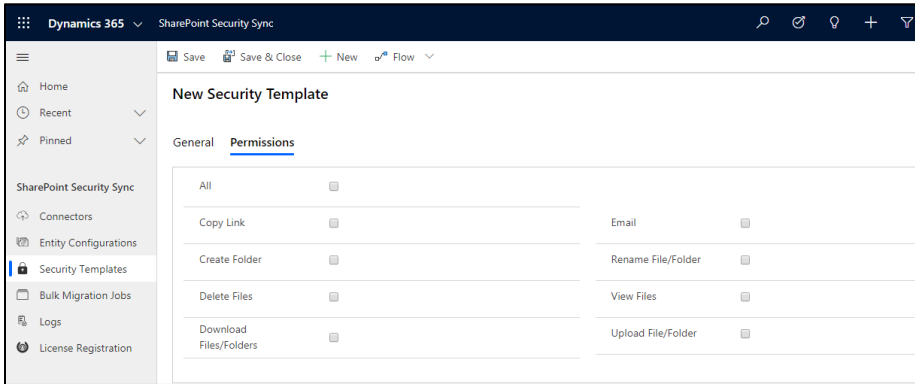
Configure Entities with connector which needs to be given controlled access.

SharePoint Security Sync - White Paper



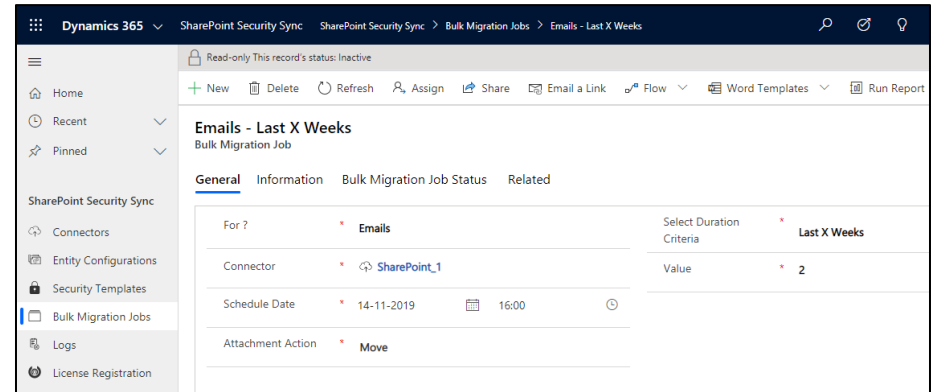
Security Templates

Restrict user actions over various features of Attach2Dynamics such as Upload, Download, Email, Create Folder, Delete, etc.



Bulk Migration Job

Migrate documents/history data for a estimated period in bulk from Dynamics 365 CRM to SharePoint.



Emails - Last X Weeks

Bulk Migration Job

General Information Bulk Migration Job Status Related

Total Records Processed	0		
Last updated:	14-11-2019 15:36		
Total Succeeded Records	0	Total Succeeded Size (KB)	0.00
Last updated:	14-11-2019 15:36	Last updated:	14-11-2019 15:36
Total Ignored Records	0	Total Ignored Size (KB)	0.00
Last updated:	14-11-2019 15:36	Last updated:	14-11-2019 15:36
Total Failed Records	0	Total Failed Size (KB)	0.00
Last updated:	14-11-2019 15:36	Last updated:	14-11-2019 15:36

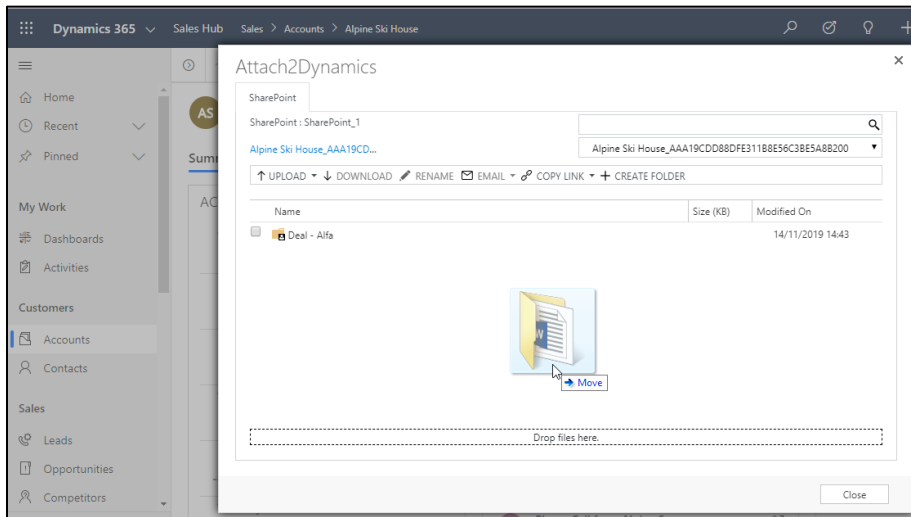
Move/Copy Attachments

Move/Copy Dynamics 365 CRM Notes/Email/Sales Literature Attachments to SharePoint.

SharePoint Security Sync - White Paper

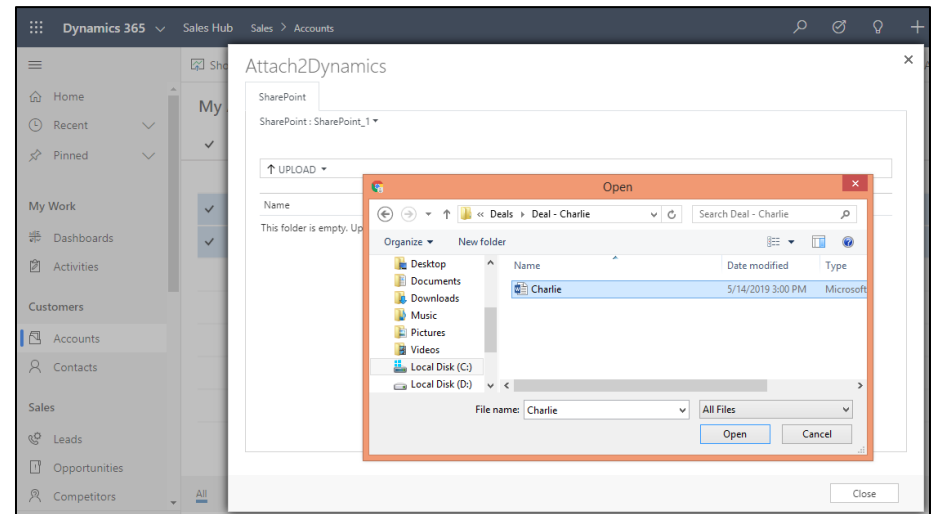
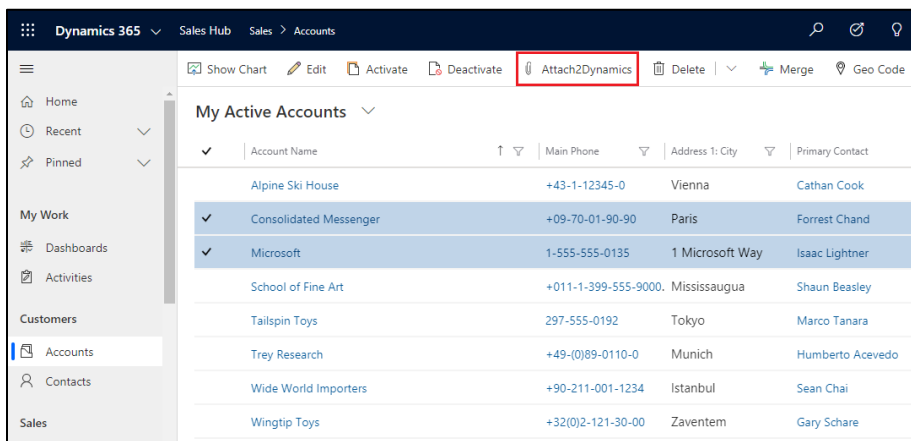
Drag & Drop

Drag and Drop files/folders through the Attach2Dynamics UI.



Direct Upload of files from Home Page

Upload files directly from home page for selected records.



Download & Upload

Download & Upload files/folders through the UI directly into SharePoint.

Deep Search Tab

Search for files/folders within subfolders by entering keyword in search tab.

Email

Email anonymous link (of a file/folder) or file as an attachment.

Create folder

Create folders in SharePoint as per requirement.

Rename

Rename files/folders in SharePoint.

SharePoint Security Sync - White Paper

Copy a Link

Copy and share generated link as per requirement.

Delete

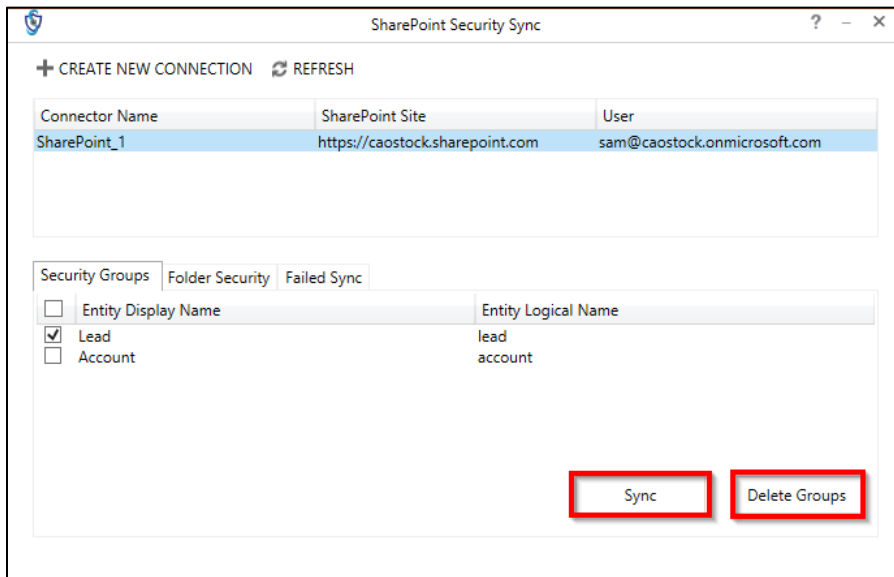
Delete unwanted files from SharePoint.

View Files

Preview files stored in SharePoint before downloading.

SharePoint Security Sync Tool

Use SharePoint Security Sync tool to sync security privileges on a large scale with ease.



Log

View 'Log' entity for errors occurred during the functioning of SharePoint Security Sync.

Contact Us:

INOGIC (MUMBAI - INDIA)

M/S. INOGIC TECH (INDIA) PVT. LTD.

A/301, Everest Nivara InfoTech Park,

TTC Industrial Area, MIDC, Turbhe

Navi Mumbai, Maharashtra 400705

INDIA

E-mail: crm@inogic.com

Skype: [crm@inogic.com](https://www.skype.com/people/inogic)

Twitter: @inogic